

Poly-Flo®

Co-extruded Double Containment

Version 2.0

Another
Corrosion
Problem
Solved.™

ASAHI/AMERICA

US Patent #4779652

Environmental Products

Size Range

Small

Large

Material

Special Features

Duo-Pro:



PP, PVDF, ECTFE

Most material/size combinations

Fluid-Lok:



PE

Cost effective, domestic PE

Pro-Lock:



PVC, CPVC

Adapt to installed vinyl systems

Poly-Flo:



PP, PE

Excellent Cost : Performance

Another
Corrosion
Problem
Solved.™

Unlimited Solutions, Single Source Responsibility

Material:

Chem Proline® PE

Proline® PP-R

Color:

Black

Euro Gray

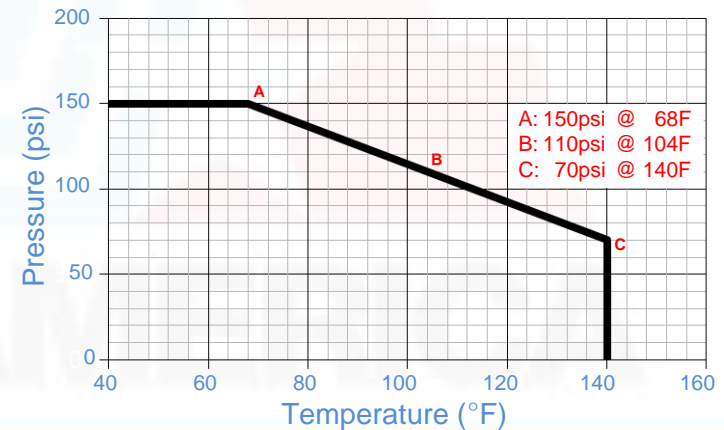
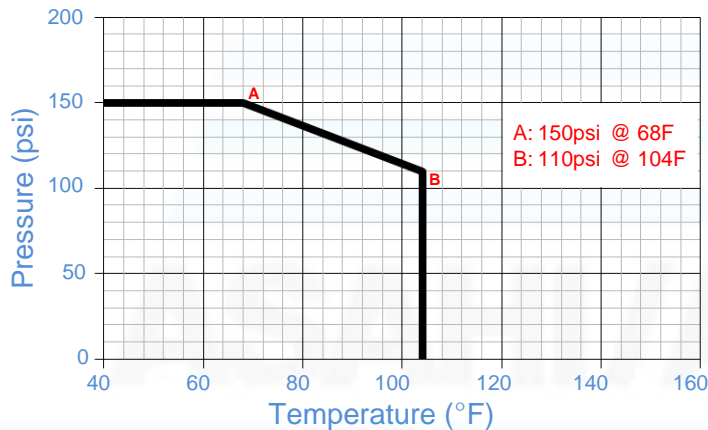
Application:

Directional Drilling, NaClO

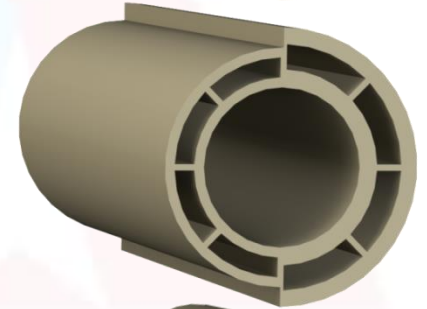
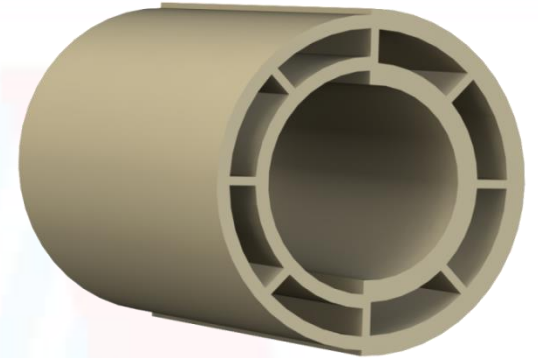
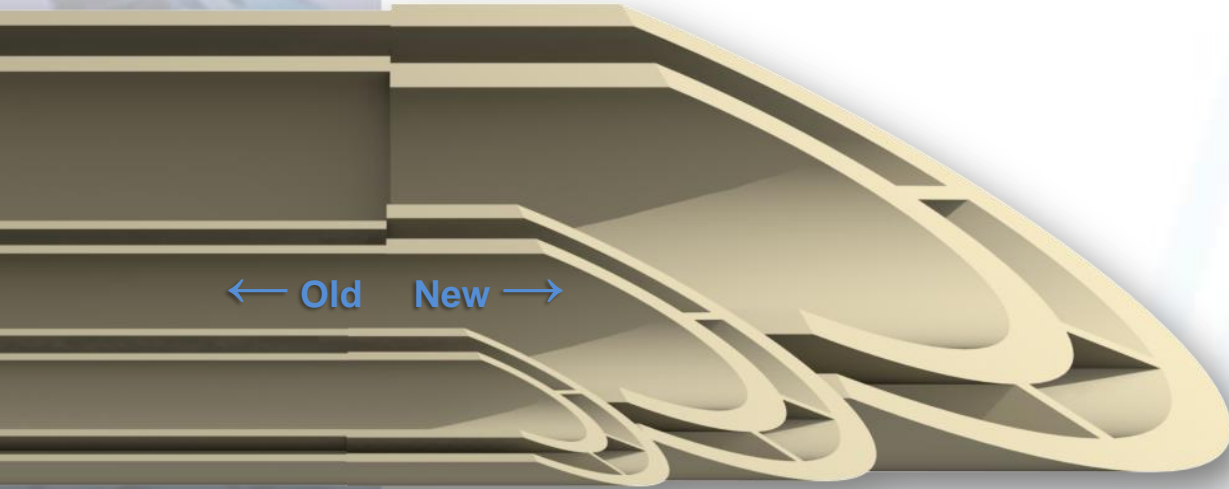
Higher Temperatures

50 Year Rating:

Another
Corrosion
Problem
Solved.™



Old vs. New Similar ID , OD, and Annular Space



Another
Corrosion
Problem
Solved.™

ASAHI/AMERICA

Production:

- Cost savings vs. fabricated systems
- More uniform construction
- Higher safety

Co-Extrusion:

- Acts like single wall pipe
- Fewer concerns during expansion & contraction
- Eliminate separation during directional drilling

SDR Design:

- Full pressure rating
- No special welding clamps
- Similar logistics to single wall products

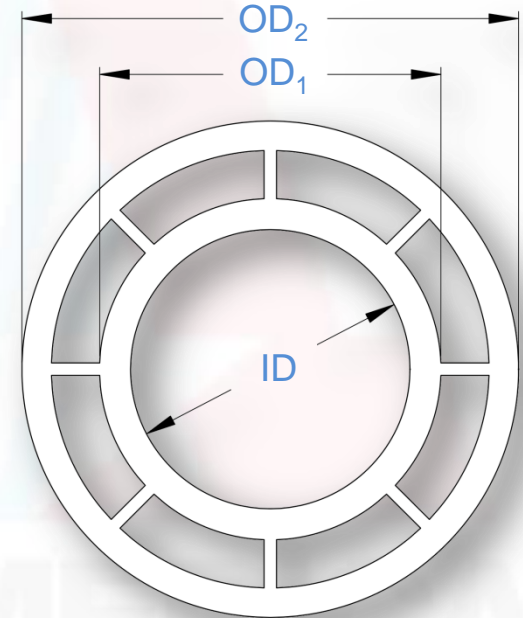
Another
Corrosion
Problem
Solved.™



Standard Sizes: PE & PP dimensions stocked in Lawrence, MA

All pipe is 5m (16.4') long SDR 11 x 17

Actual (mm)	Nominal (inch)	OD ₁	OD ₂	ID
32 x 50	1 x 1½	1.26	1.97	1.00
63 x 90	2 x 3	2.48	3.54	2.00
110 x 160	4 x 6	4.33	6.30	3.50



Another
Corrosion
Problem
Solved.™

ASAHI/AMERICA

Custom Options:

Longer Pipe Lengths

Example: 11.8m (38'-8") straight lengths
100m (330') coiled lengths

Custom Diameters

Example: 32x63mm (1" x 2")
50x90mm (1½" x 3")

Custom Wall Thicknesses

Example: SDR 17x33
SDR 33x33

Larger Diameters

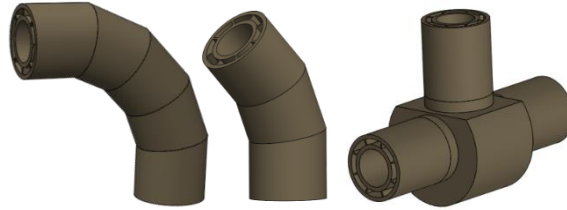
Example: 160x200mm (6" x 8")
200x250mm (8" x 10")

Minimum order quantities apply, consult Engineering.

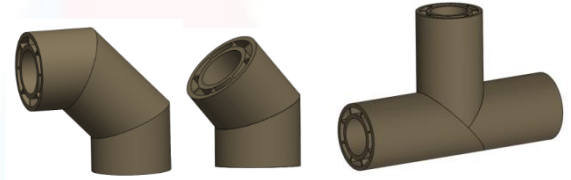
Another
Corrosion
Problem
Solved.™

Product Offering:

Full Pressure Fittings

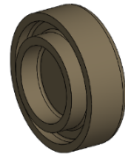


Drainage Fittings¹

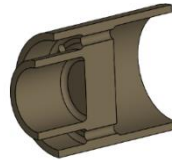


Machined:

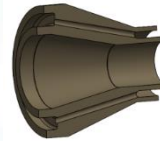
End Cap



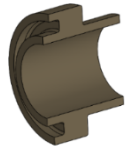
Outer-wall Adapter



Reducer



End Termination

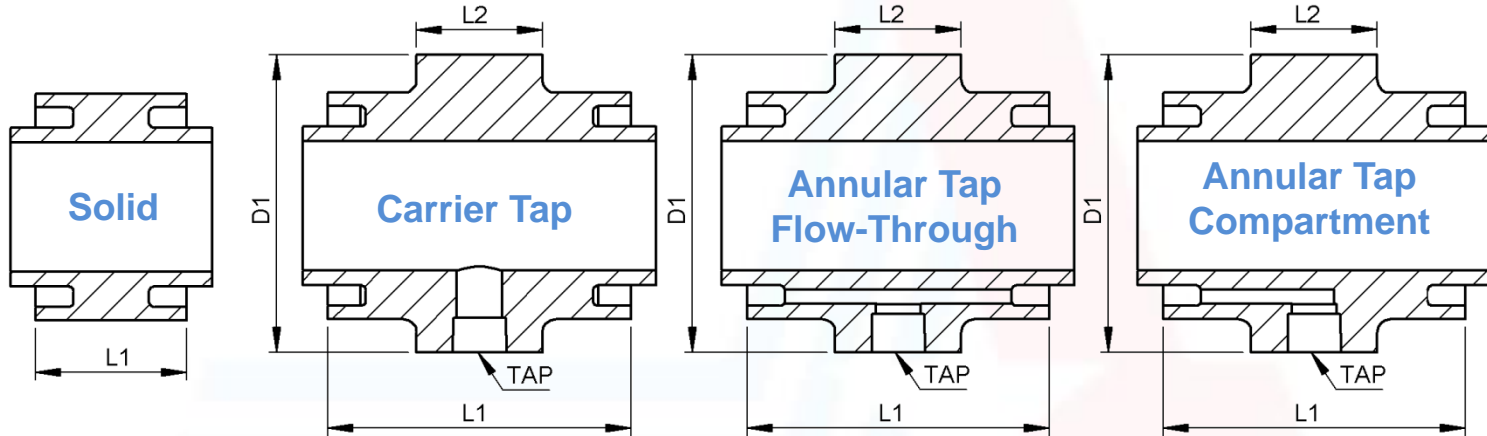


Another
Corrosion
Problem
Solved.™

Specialty Items → Next Slide

1) Reduced Pressure Rating

Dogbones®:



Application:

Isolate zones for leak detection.

Sample chemical or otherwise use small volumes. High point vent or vacuum breaker

Non-isolated leak detection. Used when fewer locations are needed

Isolated leak detection port for manual or automated detection

Another
Corrosion
Problem
Solved.™

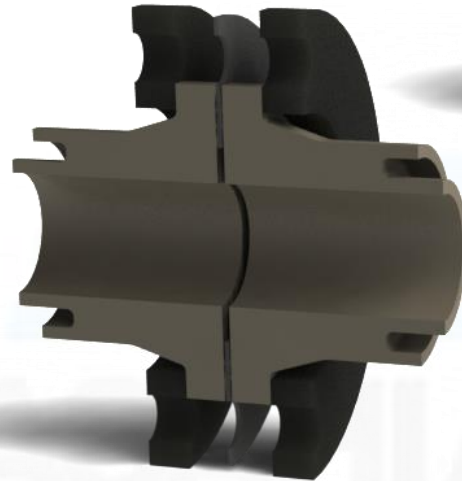
Flange Design:

Multiple options including:

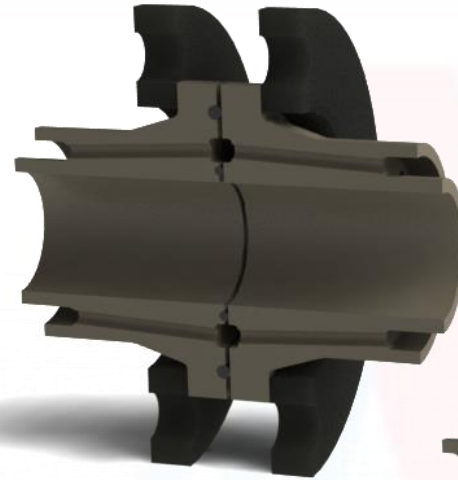
→ Isolation or Flow-Through

→ O-ring or Gasket

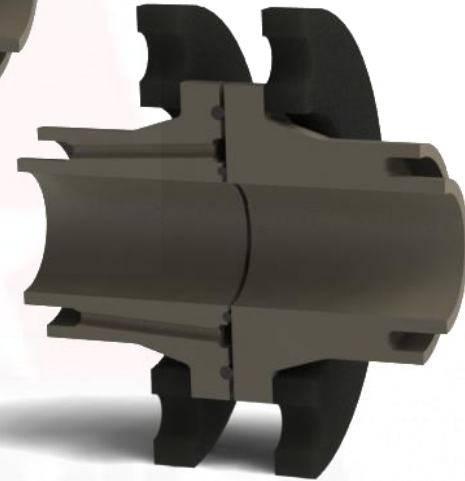
Full Pressure Rating



Gasket Isolation















Flow-Through
O-Ring & Flat Face



O-Ring/Solid
Combination

Another
Corrosion
Problem
Solved.™

Tools: Utilize standard equipment, no special inserts required

	32 x 50 1 x 1½	63 x 90 2 x 3	110 x 160 4 x 6
Miniplast			
Maxiplast			
Field 6			
Shop 12			
Field 12			

Another
Corrosion
Problem
Solved.™