

Type-57 LIS Butterfly Valves

Direct Replacement for ISO-5752 Short Pattern Metal Butterfly Valves

The Type-57 LIS butterfly valve is well suited for a wide variety of life support applications. The Type-57 LIS butterfly valve conforms to ISO 5752 Short Pattern face to face dimensions. This allows the Type-57 LIS to **directly replace metal valves** conforming to the same standard. Available as ANSI B16.5 Wafer or ANSI B16.5 Lug models with 316SS drop-in lug inserts. Can be pneumatically or electrically actuated.

Specifications	
Sizes:	Lever: 3" - 8" Gear: 3" - 8"
Models:	Wafer Style or Lug Style with 316SS lug inserts
Operators:	Lever and Plasgear
Bodies:	PVC
Discs:	PVC, CPVC, PP and PVDF
Seats:	EPDM, FKM, or Nitrile
Seals:	Same as seating material
Stems:	316 stainless steel, Titanium, Hastelloy C [®] ‡

‡ Trademark of Cabot Corporation



Type-57LIS Lever Butterfly Valves



Standard Features (Sizes 3" – 8")

- Direct replacement for metal valves conforming to ISO 5752 short face-to-face dimensions
- Standard model has PVC body with PP disc for superior chemical and corrosion resistance as well as elevated temperature capabilities
- Non-wetted 316 stainless steel stem has full engagement over the entire length of the disc and is totally isolated from the media
- Full seat design isolates the body and stem from the media and acts as mating flange gaskets
- Integral body stops in valve body to prevent overtightening of mating flanges
- Spherical disc design for improved Cv's and superior durability
- Plasgear™ operator – Industry first composite enclosure gear operator
- Integral ISO-5211 top mounting pad for actuation mounting
- Polypropylene stem retainer

Options

- 316 stainless steel lug inserts
- Pneumatic and electric actuators with accessories
- Alternate disc materials
 - (I) PVC
 - (II) PVDF
- Alternate stem materials
 - (I) Titanium
 - (II) Hastelloy C®†
- 2" square operating nuts on valve stem or gear operator shaft
- Stem extensions for above ground or buried applications
- Chain operators
- Manual limit switches

Series 17 Electric Actuator on Type 57P



**Series 17 Electric Actuator
on Type 57P Butterfly Valve**

Specifications

- Torque:** 350 in/lbs.
- Voltage:** 85-265 VAC single phase, 24 VDC
- Amp Draw:** 0.45
- Wiring:** 1.2M flying leads
- Max Ambient Temperature:** 150^o
- Limit Switches:** Two (2) SPDT end of travel switches
Two (2) SPDT dry contact switches
rated 5A@250 VAC
- Heater:** 0.5W
- Cycle Time per 90°:** 12 seconds

Standard Features

- **Size:** Compact, lightweight
- **Motor:** Low current, reversing DC motor
- **Multi-voltage:** 85-265VAC single-phase, 24VDC
- **Overload Protection:** Electric motor cuts out at 2 Amps
- **Gear Train:** Permanently lubricated solid gearing
- **Corrosion Resistant Enclosure:** Thermally bonded powder coat finish
- **Position Indication:** Mechanical dial indication
- **LED's:** Open and close LED position indication
(green/closed, red/open)
- **De-clutchable Manual Override:** Push down override button and use provided lever to manually position in the event of no power
- **Auxiliary Limit Switches:** Dry contact switches for open and close positions
- **Enclosure:** Combination NEMA Type 4X and 6 enclosure with captive cover screws
- **Electrical Connections:** Sealed cable gland with 1.2M flying leads
- **Space Heater:** Standard equipment

Sample Specifications

All Series 17 electric actuators shall have a bidirectional (reversing type) motor, with a permanently lubricated gear train. Actuator shall have a die cast aluminum housing anodized inside and outside, with an external polyester powder coat finish, rated Type 4X and 6. Each actuator shall have a manual override, visual position indication, two auxiliary limit switches, two position indicating lights and a space heater, as supplied by Asahi/America, Inc.

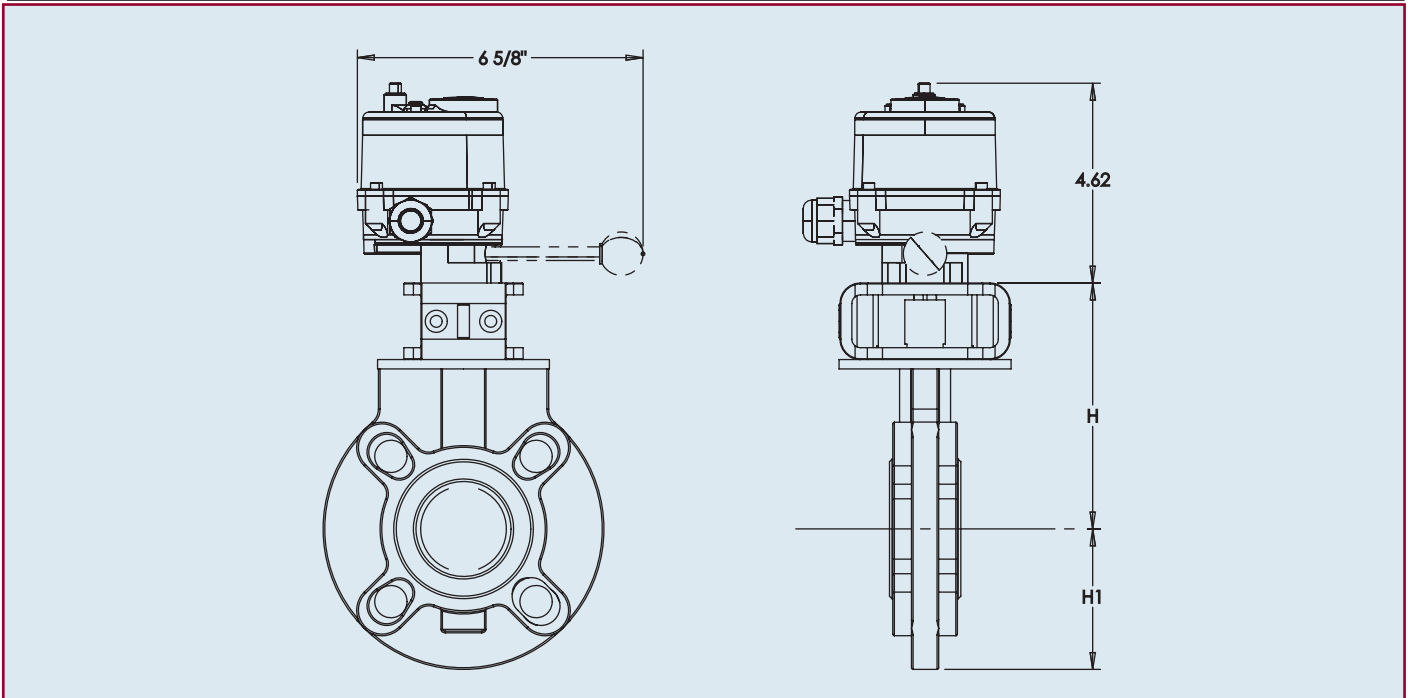
Engineering Data

Torque (in/lbs.)	110 VAC		220 VAC		24 VDC		Cycle Time per 90 Degrees (Seconds)*	Weight (lbs)
	Amp Draw	Duty Cycle	Amp Draw	Duty Cycle	Amp Draw	Duty Cycle		
350	0.12	70%	0.06	70%	0.46	70%	12	2.7

*Cycle times are approximate
AMP rating is considered running.

Duty cycles are for ambient temperature. (73^o F)

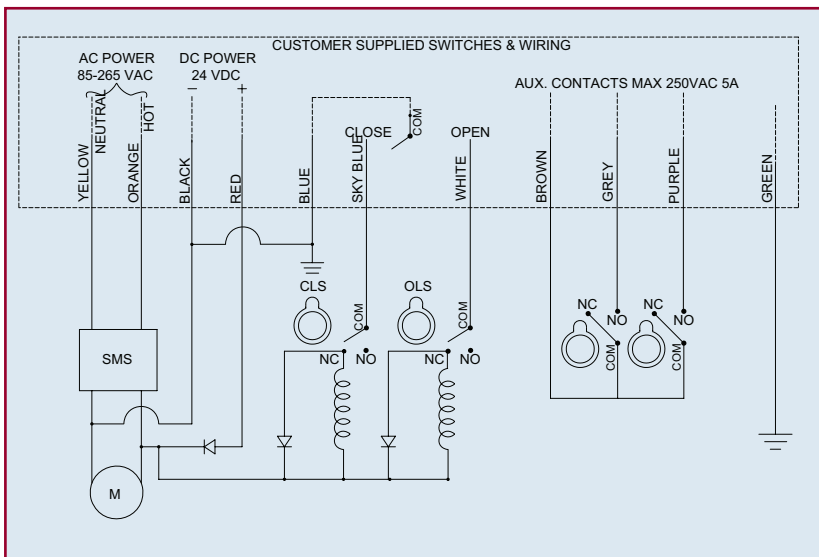
Series 17 Electric Actuator



Dimensions (in.)

INCHES	mm	H	H1
1-1/2	50	5.51	2.95
2	63	5.75	3.25
2-1/2	75	6.18	3.64
3	90	6.46	4.15

Wiring Diagram



Series 17 Electric Actuator on Type-21



Specifications

- Torque:** 350 in./lbs.
- Voltage:** 85-265 VAC single phase, 24 VDC
- Amp Draw:** 0.45
- Wiring:** 1.2M flying leads
- Max Ambient Temperature:** 150°
- Limit Switches:** Two (2) SPDT end of travel switches
Two (2) SPDT dry contact switches
rated 5A@250 VAC
- Heater:** 0.5W
- Cycle Time per 90°:** 12 seconds

Standard Features

- **Size:** Compact, lightweight
- **Motor:** Low current, reversing DC motor
- **Multi-voltage:** 85-265VAC single-phase, 24VDC
- **Overload Protection:** Electric motor cuts out at 2 Amps
- **Gear Train:** Permanently lubricated solid gearing
- **Corrosion Resistant Enclosure:** Thermally bonded powder coat finish
- **Position Indication:** Mechanical dial indication
- **LED's:** Open and close LED position indication
(green/closed, red/open)
- **De-clutchable Manual Override:** Push down override button and use provided lever to manually position in the event of no power
- **Auxiliary Limit Switches:** Dry contact switches for open and close positions
- **Enclosure:** Combination NEMA Type 4X and 6 enclosure with captive cover screws
- **Electrical Connections:** Sealed cable gland with 1.2M flying leads
- **Space Heater:** Standard equipment

Sample Specifications

All Series 17 electric actuators shall have a bidirectional (reversing type) motor, with a permanently lubricated gear train. Actuator shall have a die cast aluminum housing anodized inside and outside, with an external polyester powder coat finish, rated Type 4X and 6. Each actuator shall have a manual override, visual position indication, two auxiliary limit switches, two position indicating lights and a space heater, as supplied by Asahi/America, Inc.

Engineering Data

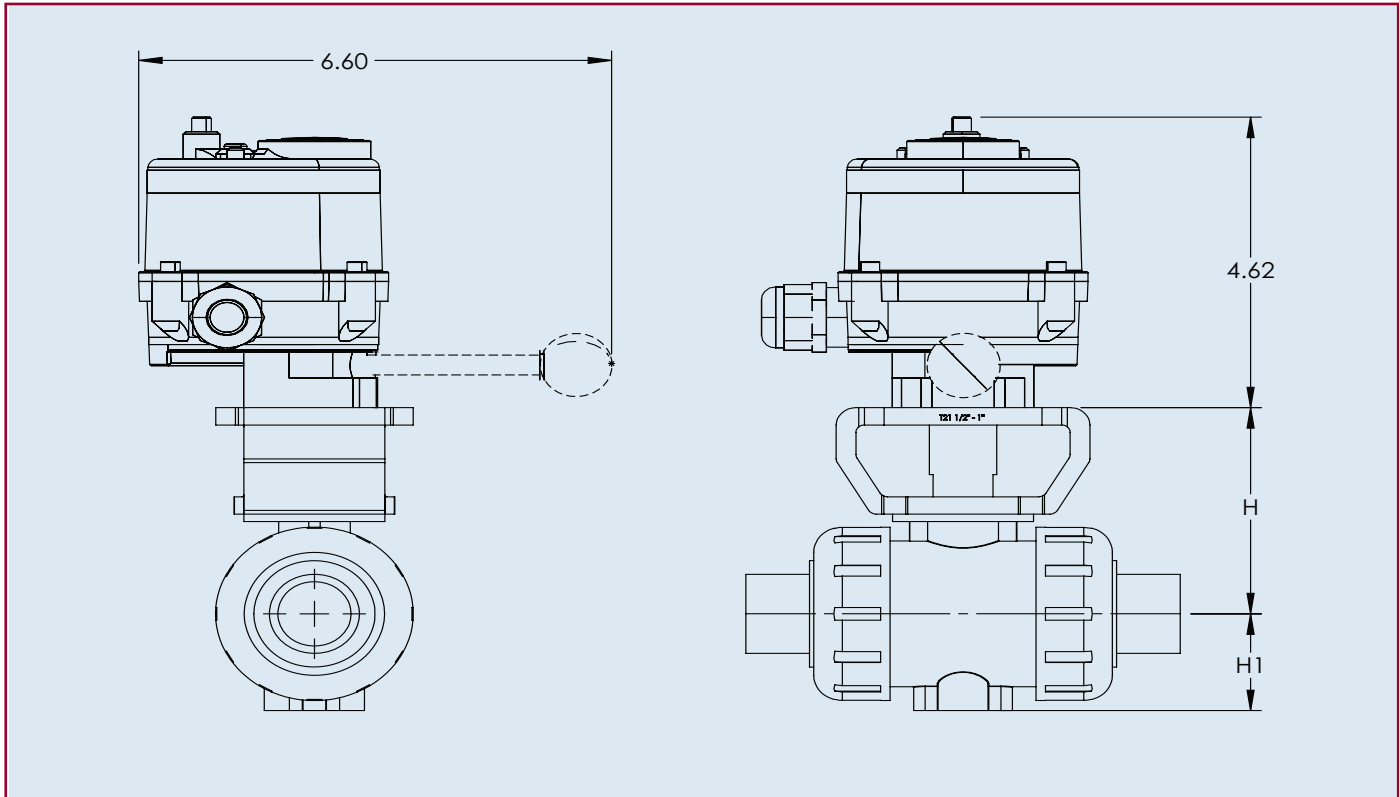
Torque (in./lbs.)	110 VAC		220 VAC		24 VDC		Cycle Time per 90 Degrees (Seconds)*	Weight (lbs)
	Amp Draw	Duty Cycle	Amp Draw	Duty Cycle	Amp Draw	Duty Cycle		
350	0.12	70%	0.06	70%	0.46	70%	12	2.7

*Cycle times are approximate

AMP rating is considered running.

Duty cycles are for ambient temperature (73° F).

Series 17 Electric Actuator



Dimensions (in.)

INCHES	mm	H	H1
1/2	15	2.76	1.14
3/4	20	3.01	1.38
1	25	3.29	1.54
1-1/4	32	3.64	1.85
1-1/2	40	3.98	2.17
2	50	4.43	2.60

Wiring Diagram

