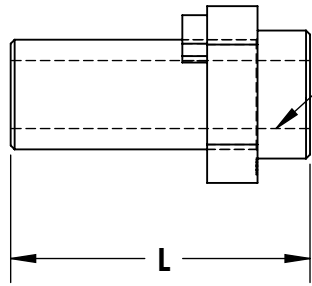


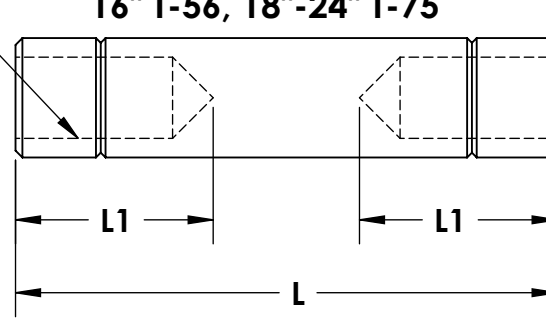
REV	DATE	DESCRIPTION	BY	FROM
A	7/27/09	FIRST ISSUE	CW	DH
B	10/7/15	10" & 12" THREADS	CW	MW

**MACHINED LUG
1-1/2"-14" T-57**



NOTE 1: NOT FOR T-57L

**MACHINED LUG
16" T-56, 18"-24" T-75**



VALVE SIZE	T	L	L1
1-1/2	1/2-13 UNC	1.180	THRU
2	1/2-13 UNC	1.156	THRU
2-1/2	1/2-13 UNC	1.156	THRU
3	1/2-13 UNC	1.463	THRU
4	1/2-13 UNC	1.643	THRU
6	5/8-11 UNC	2.339	THRU
8	5/8-11 UNC	2.729	THRU
10	3/4-10 UNC	3.716	THRU
12	3/4-10 UNC	4.239	THRU
14	7/8-9 UNC	4.375	THRU
16	7/8-9 UNC	5.750	2.00
18	1-8 UNC	6.250	2.75
20	1-8 UNC	6.625	2.75
24	1-8 UNC	7.375	2.75

DOWNSTREAM

UPSTREAM

INTERNAL
THREAD

MACHINED LUG
AS INSTALLED
IN VALVE BODY

CROSS SECTION OF VALVE BODY

**NOTE 2: LUG CENTERED
IN VALVE BODY**

UNLESS OTHERWISE SPECIFIED DIMENSIONS ARE IN INCHES	
MACHINING TOLERANCES:	2 PL DECIMALS ±.01 3 PL DECIMALS ±.005
FABRICATION TOLERANCES:	ANGULAR ± 1/2° FRACTIONAL ± 1/64 1/2" - 8" ± 1/4 10" AND UP ± 1/2 ANGULAR ± 1.0°
WELD TYPE:	N/A
MATERIAL:	SS
FINISH:	125μ"

THIS DRAWING AND ALL INFORMATION HEREON IS THE PROPERTY OF ASAHI/AMERICA. ANY COPYING, REPRODUCTION OR UNAUTHORIZED USE IS FORBIDDEN WITHOUT WRITTEN CONSENT.	
NAME	DATE
DR C. Williams	10/07/15
REV	
APPR M. Willen	10/07/15
PRODUCT:	VALVE & ACT
WO#/SO#	

ASAHI/AMERICA
ISO 9001 CERTIFIED
655 ANDOVER STREET, LAWRENCE, MA



1-1/2" THRU 24" MACHINED LUGS
INTERNAL THREAD DEPTH T/57/56/75

JDE PART #	SIZE A	DWG # M02BF4370	REVISION B
SCALE N/A		SHEET 1 OF 1	