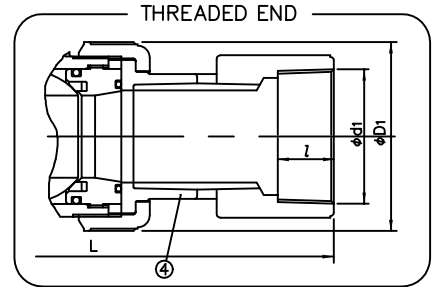
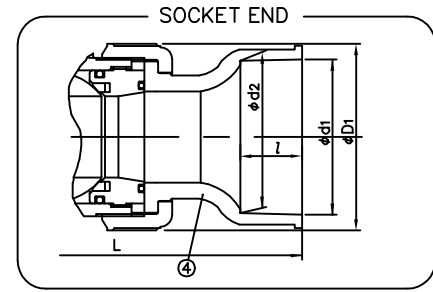
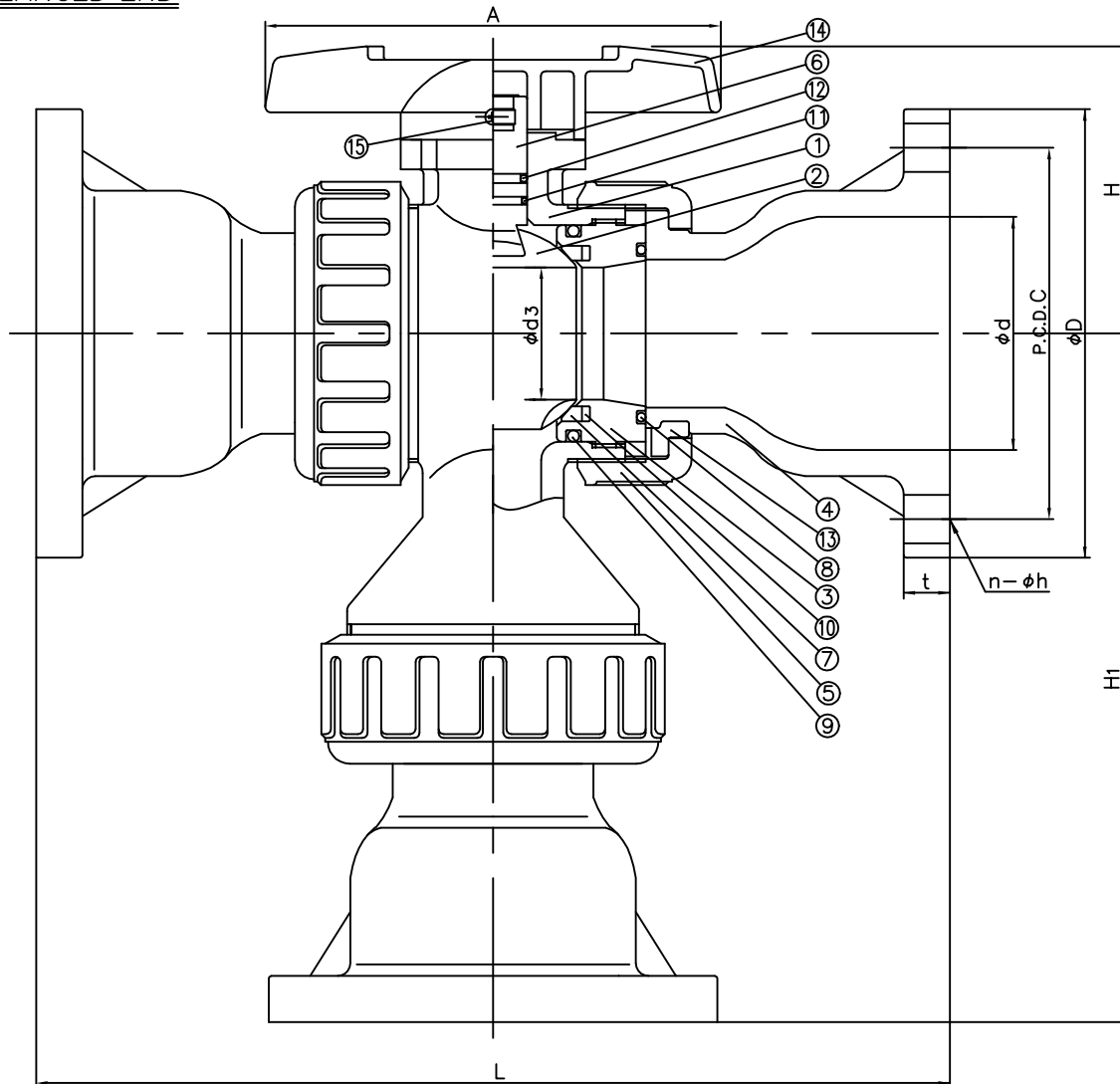


FLANGED END



15	SCREW	1	STAINLESS STEEL 304	
14	HANDLE	1	ABS	
13	STOP RING	3	PVDF	Used for Flanged End
12	O-RING (E)	1	□ EPDM	
11	O-RING (D)	1	□ FKM	
10	CUSHION	2	□ Others	
9	O-RING (B)	2	()	
8	O-RING (A)	3	()	
7	SEAT	2	PTFE	
6	STEM	1		
5	UNION NUT	3		
4	END CONNECTOR	3	□ PVC	
3	CARRIER	2	□ CPVC	
2	BALL	1		
1	BODY	1		
No.	DESCRIPTION	No.REQ'D	MATERIAL	REMARKS

DIMENSIONS TABLE

UNIT: inch

NOMINAL SIZE	FLANGED								SOCKET PVC, CPVC				THREADED							
	ANSI CLASS 150								ANSI SCH40											
	d	D	C	n	h	L	t		d ₁	d ₂	t	L	d ₁	l	L	d ₃	D ₁	H	H ₁	A
6" 150 ^{mm}	5.75	11.00	9.50	8	0.88	23.0	1.02	6.647	6.614	3.000	23.0	6-8NPT	2.00	27.0	3.54	8.27	7.01	16.5	11.81	

NOTE. The shape and appearance of assembly differ a little with nominal size compared to this drawing.

FOR REFERENCE ONLY
ASAHI/AMERICA

THIS DRAWING AND ALL INFORMATION HEREON IS THE PROPERTY OF ASAHI/AMERICA. ANY COPYING, REPRODUCTION OR UNAUTHORIZED USE IS FORBIDDEN WITHOUT WRITTEN CONSENT.

	NAME	DATE
DR	KENICHI MIYAZAKI	2/26/04
APPD	DAVE HURLEY	2/26/04
PROD	LEO LESTER	2/26/04
	WO#/SO#	
	FILE	

ASAHI/AMERICA

ISO 9001 CERTIFIED
35 GREEN STREET, P.O. BOX 653, MALDEN, MA.



MULTIPORT BALL VALVE
TYPE 23
6"

SIZE	A	DWG. NO.	0140BV	REV	A
SCALE	NTS		SHEET 1 OF 1		