

REV	DATE	DESCRIPTION	BY	FROM
A	4/28/21	CONVERT TO SWORKS (PREV. REV E)	JH	DH

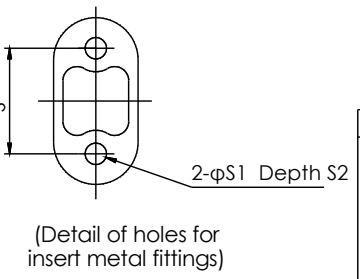
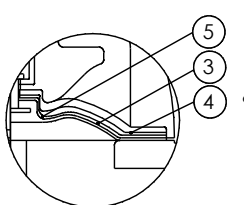
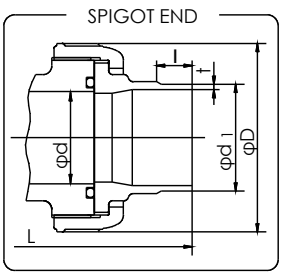
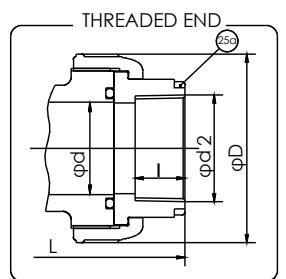
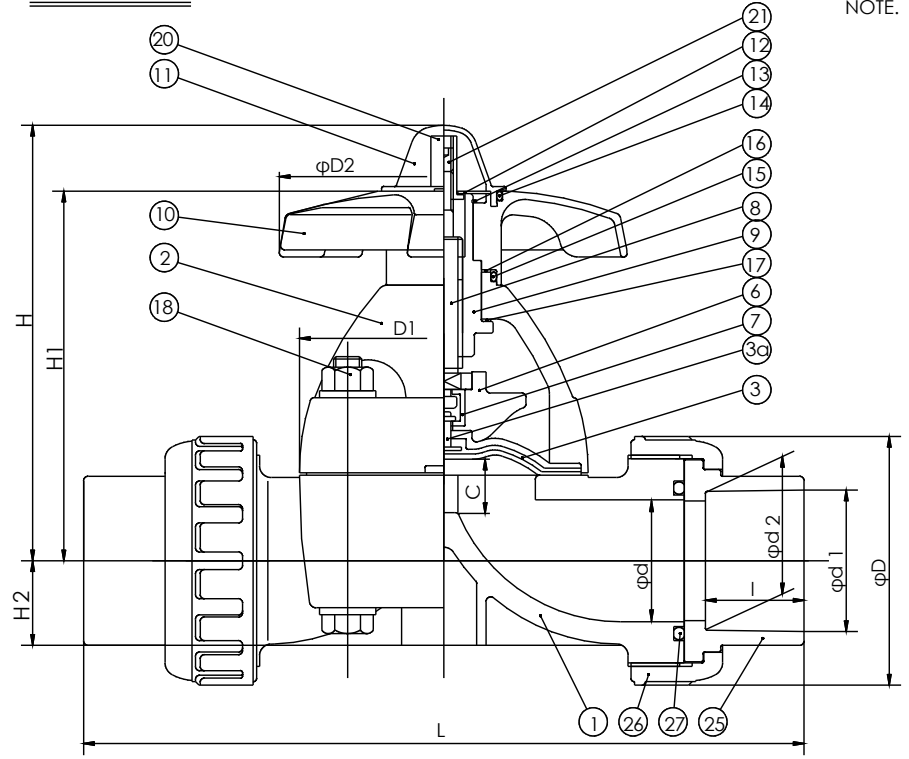
DIMENSION TABLE

NOMINAL SIZE	SOCKET											THREADED				SPIGOT (BUTT END)					D	D1	D2	C (LIFT)	H	H1	H2	S	S1	S2		
	PVC,C-PVC					PP,PVDF (DIN)			PP,PVDF (IPS)			d1	l	L	PP,PVDF																	
	ANSI SCH80					DIN 16962			PVC C-PVC	PP PVDF	DIN 3442				PP	PVDF																
	d	d1	d2	l	L	d1	d2	l									L	d1	l	t											t	t
1/2"	15mm	0.63	0.848	0.836	0.875	5.47	0.768	0.760	0.57	4.92	0.83	0.87	5.43	1/2 - 14 NPT	0.59	5.04	5.04	0.787	0.728	0.098	0.075	5.906	1.89	2.13×2.60	3.46	0.39	4.09	3.39	0.49	0.98	0.28	0.51
3/4"	20	0.79	1.058	1.046	1.000	6.18	0.965	0.957	0.63	5.55	1.03	1.00	6.09	3/4 - 14 NPT	0.67	5.83	5.83	0.984	0.866	0.106	0.075	6.772	2.36	2.13×2.60	3.46	0.39	4.17	3.46	0.57	0.98	0.28	0.51
1"	25	0.98	1.325	1.310	1.125	7.32	1.240	1.232	0.71	6.46	1.30	1.13	7.24	1-11 1/2 NPT	0.79	6.77	6.77	1.260	0.886	0.118	0.094	7.677	2.76	2.64×3.15	3.46	0.47	4.37	3.66	0.73	0.98	0.28	0.51
1 1/4"	32	1.26	1.670	1.655	1.250	7.95	1.553	1.543	0.81	6.97	1.65	1.25	7.80	1 1/4-11 1/2 NPT	0.87	7.40	7.40	1.575	1.024	0.146	0.094	8.346	3.23	2.64×3.15	3.46	0.47	4.57	3.82	0.89	0.98	0.28	0.51
1 1/2"	40	1.57	1.912	1.894	1.375	10.47	1.947	1.937	0.93	9.09	1.89	1.37	10.28	1 1/2-11 1/2 NPT	0.98	9.65	9.65	1.969	1.260	0.181	0.118	10.866	3.94	4.25×4.25	6.14	0.83	6.97	5.67	1.08	1.77	0.35	0.59
2"	50	2.05	2.387	2.369	1.500	11.54	2.461	2.445	1.08	10.79	2.36	1.50	11.54	2-11 1/2 NPT	1.10	11.06	10.95	2.480	1.417	0.228	0.118	12.087	4.17	4.84×4.84	6.14	0.98	7.52	6.22	1.42	1.77	0.35	0.59

NOTE. 1. The shape and appearance of assembly differ a little with nominal size compared to this drawing.

UNIT : inch

SOCKET END



25c	RING	2	STAINLESS STEEL 304	used for C-PVC connector size 1/2 ~ 1"
27	O-RING (C)	2	<input type="checkbox"/> EPDM <input type="checkbox"/> FKM-F <input type="checkbox"/> Others()	FKM-F used for PTFE diaphragm
21	SCREW	1	STAINLESS STEEL 304	
20	STOPPER	1	COPPER ALLOY (C3604)	
18	BOLT - NUT - WASHER	4sets	<input type="checkbox"/> STAINLESS STEEL 304 <input type="checkbox"/> Others()	
17	THRUST RING (B)	1	UHMWPE	
16	THRUST RING (A)	1	UHMWPE	
15	O-RING (B)	1	EPDM	
14	O-RING (A)	1	EPDM	
13	RETAINING RING-C TYPE	1	STAINLESS STEEL 304	
12	NAME PLATE	1	PVC	
11	GAUGE COVER	1	PC	
10	HAND WHEEL	1	PP	
9	SLEEVE	1	COPPER ALLOY (C3604)	
8	STEM	1	COPPER ALLOY (C3604)	
7	JOINT	1	STAINLESS STEEL 304	
6	COMPRESSOR	1	PVDF	
5	PVDF GAS BARRIER	1	PVDF	used for PTFE diaphragm
4	CUSHION	1	EPDM	used for PTFE diaphragm
3a	INSERTED METAL OF DIAPHRAGM	1	STAINLESS STEEL 304	
3	DIAPHRAGM	1	<input type="checkbox"/> EPDM <input type="checkbox"/> PTFE <input type="checkbox"/> others()	
26	UNION NUT	2	BODY END CONNECTOR UNION NUT BONNET	
25	END CONNECTOR	1	<input type="checkbox"/> PVC/PVC <input type="checkbox"/> C-PVC/PP <input type="checkbox"/> PP/PP <input type="checkbox"/> PVDF/PPG <input type="checkbox"/> PVDF/PVDF	
2	BONNET	1		
1	BODY	1		
No.	DESCRIPTION	No.REQD	MATERIAL	REMARKS

UNLESS OTHERWISE SPECIFIED	
DIMENSIONS ARE IN INCHES	
MACHINING TOLERANCES:	2 PL DECIMALS ±.01 3 PL DECIMALS ±.005
FABRICATION TOLERANCES:	ANGULAR ± 1/2° FRACTIONAL ± 1/64
	1/2" - 8" ± 1/4 10" AND UP ± 1/2 ANGULAR ± 1.0°
WELD TYPE:	N/A
MATERIAL:	AS NOTED
FINISH:	125µ"

THIS DRAWING AND ALL INFORMATION HEREIN IS THE PROPERTY OF ASAHI/AMERICA. ANY COPYING, REPRODUCTION OR UNAUTHORIZED USE IS FORBIDDEN WITHOUT WRITTEN CONSENT.	
NAME	DATE
J. Hughes	04/28/21
APPR	DATE
D. Hurley	04/28/21
PRODUCT:	VALVE & ACT
WO#/SO#	

ASAHI/AMERICA
ISO 9001 CERTIFIED
655 ANDOVER STREET, LAWRENCE, MA

TRUE UNION DIAPHRAGM VALVE
TYPE 14 1/2" THRU 2"

JDE PART # 0062DI

SIZE **A** DWG # **0062DI** REVISION **A**

SCALE N/A SHEET 1 OF 1