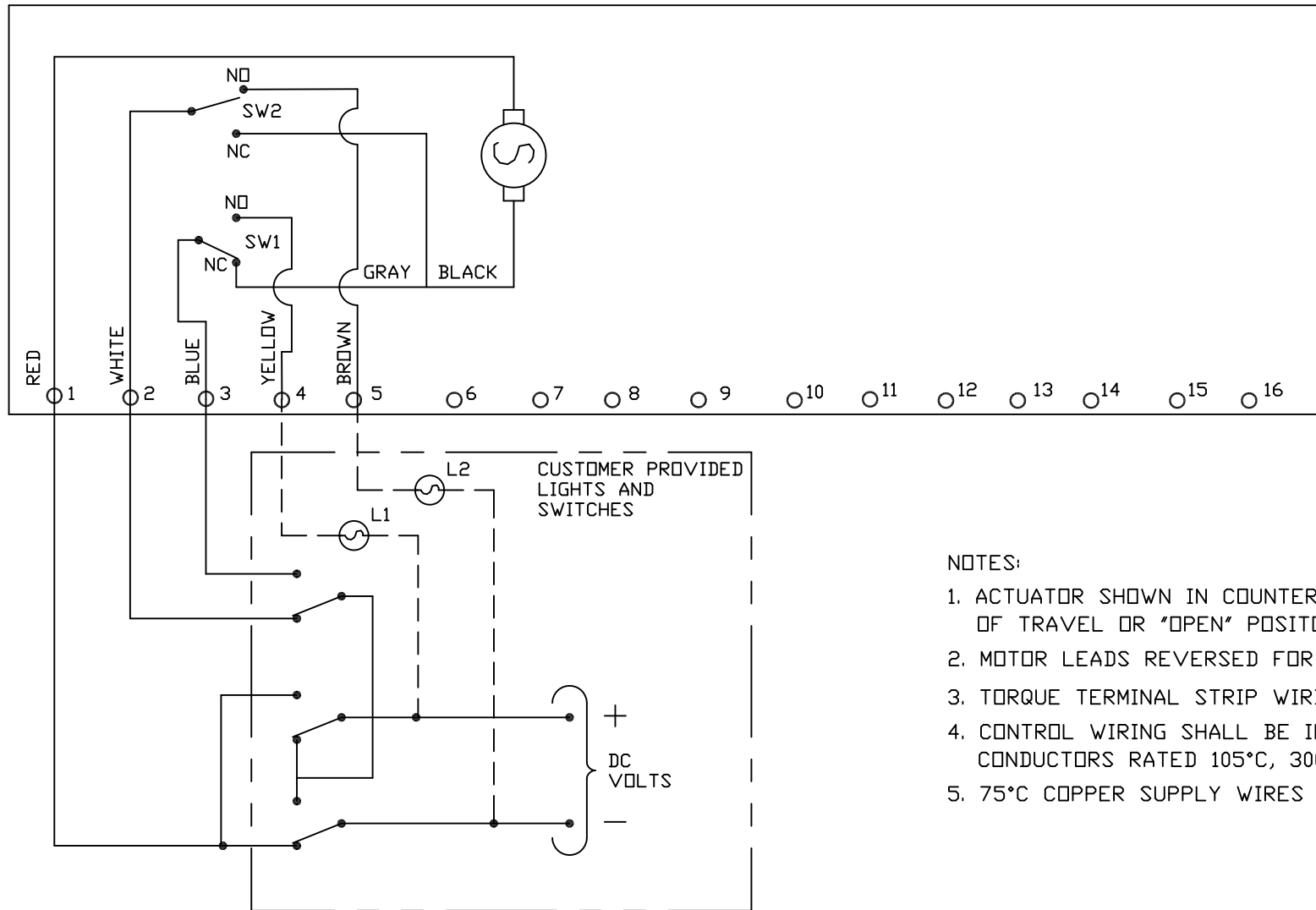


DC WIRING DIAGRAM



NOTES:

1. ACTUATOR SHOWN IN COUNTER CLOCKWISE EXTREME OF TRAVEL OR "OPEN" POSITION
2. MOTOR LEADS REVERSED FOR 1100 & 2000 IN\*LBS.
3. TORQUE TERMINAL STRIP WIRING TO 5 IN-LBS.
4. CONTROL WIRING SHALL BE INSULATED WITH CONDUCTORS RATED 105°C, 300V MINIMUM.
5. 75°C COPPER SUPPLY WIRES ONLY.

1    2    3  
 -    +        = OPEN  
 +        -        = CLOSE

THIS DRAWING AND ALL INFORMATION HEREON IS THE PROPERTY OF ASAHI/AMERICA. ANY COPYING, REPRODUCTION OR UNAUTHORIZED USE IS FORBIDDEN WITHOUT WRITTEN CONSENT.

	NAME	DATE
DR	JOHN GLASSFORD	1/8/08
APPD	KEN BLYSTONE	1/8/08
PROD		
WO#/CO#		
FILE		

**ASAHI/AMERICA**

ISO 9001 CERTIFIED  
 35 GREEN STREET, P.O. BOX 653, MALDEN, MA.



SERIES 92 WIRING DIAGRAM  
 12/24 VDC

SIZE	A	DWG. NO.	0044EL	REV	C
SCALE	NTS		SHEET 1 OF 1		