

ASAHI/AMERICA

PRODUCT OFFERINGS

**Thermoplastic Valves & Actuators
Piping Systems • Welding Equipment**



Your Experts in Plastics™

Asahi/America, Inc. has been a leading supplier and manufacturer of corrosion resistant thermoplastic valves and piping systems for over 40 years. From the harshest chemicals to the toughest weather conditions, our family of fluid flow solutions provides dependable performance for a wide range of applications and reliability where it matters most.

Through our global partnerships with Asahi Yukizai Corporation, AGRU, and Bänninger, we are uniquely positioned to deliver the highest quality products to customers in the United States, Latin America, Canada and Australia.

Asahi/America doesn't specialize in one industry – we specialize in your industry. With a catalog of products designed to handle specific applications, meet industry standards, exceed performance expectations, and a staff to support you through product and material recommendations and selection, training and installation, Asahi/America is the obvious partner for your next project.

We Know Your Industry

- Aquariums & Zoos
- Bleach Plants
- Chemical Processing
- Commercial Heating/Cooling
- Institutional
- Landfill
- Mining
- Offshore Oil
- Pharmaceutical
- Plating & Pickling
- Semiconductor
- Ultra Pure Water
- Wastewater Treatment

Headquartered in Lawrence, Massachusetts, Asahi/America maintains a vast inventory of valves, actuation, pipe and fittings, which can be shipped directly to customers or incorporated into custom spools and skids by our fabrication department. Our 200,000-square-foot facility also houses a machine shop, valve and actuation assembly shops, a Class 1000 cleanroom, research and development lab, welding equipment rental, and corporate offices.

Our Louisiana-based fabrication division specializes in large-quantity and large-scale custom pieces.

Our manufacturing, sales, engineering and support staff have decades of experience with thermoplastics and the industries we serve. As an ISO 9001:2015 certified manufacturer, our employees are dedicated to providing quality products and services, which we couple with education and training to ensure a complete solution for your application.



Commitment to Communication and Education

- Certified CEU/PDH Presenters
- Customer & End-User Engagement
- Field Training Services
- Industry- and Application-Specific Certifications & Approvals
- Industry Organization & Association Memberships & Involvement
- Product & Workmanship Warranties
- Vast Informational, Technical & Video Libraries

Quality Products

- Air & Gas Handling Piping Systems
- Commercial Piping Systems
- Double Wall Environmental Piping Systems
- Electric & Pneumatic Actuation
- High Purity Piping Systems
- Manual Valves
- Single Wall Industrial Piping Systems
- Welding Equipment

Innovating and Evolving

Asahi/America strives to provide the best products and service for our customers every day. From our newly expanded cleanroom to the cutting-edge technology in our machine and fabrication shops, we never stop looking for ways to improve.



Outstanding Service

Whether you're making repairs, expanding an existing system, or designing from scratch, Asahi/America is your single source for a complete solution. The components we offer – valves, actuation, pipe and fittings – are engineered to work together. Using our systems approach means using one company to provide the parts you need and the engineering expertise to put them together; one company for equipment and training; one company to answer questions and support you from concept through completion.

Solutions and Support

- BIM/CAD Product Library
- Custom Fabrication Services
- Customer Portal (My Asahi)
- Engineering Support
- Expanded Cleanroom Capabilities
- Extensive Distribution Network
- Global Manufacturing Partnerships
- Research & Development Facility
- Welding Equipment Rental Services



Thermoplastic Valves



Asahi/America valve and actuation products have a three-year product warranty. See page 19 of this catalog or visit our website at asahi-america.com/support/warranty-policy for full terms and conditions.

Type-21/21a Ball Valves

Sizes: 1/2" - 6"

Models (PVC & CPVC): Socket, threaded, flanged (ANSI)

Models (PP & PVDF): IPS or metric (DIN) socket, threaded, butt, flanged (ANSI)

Bodies: PVC, CPVC, PP, PVDF

Seats: PTFE backed with EPDM or FKM

Seals: EPDM, FKM



NSF-61 Certified

(1/2" - 4" PVC/CPVC/EPDM/FKM)

Type-23 Multiport® Ball Valves

Sizes: 1/2" - 6"

Models (PVC & CPVC): Socket, threaded, flanged (ANSI)

Models (PP & PVDF): IPS or metric (DIN) socket, threaded, butt, flanged (ANSI)

Bodies: PVC, CPVC, PP, PVDF

Seats: PTFE backed with EPDM or FKM

Seals: EPDM, FKM



NSF-61 Certified

(1/2" - 4" PVC/EPDM/FKM)

Type-21a SST Flow Control Ball Valves

Sizes: 1/2" - 2"

Models: Socket, threaded, flanged (ANSI)

Body: PVC

Seats: PTFE backed with EPDM or FKM

Seals: EPDM, FKM



Omni® Type-27 Ball Valves

Sizes: 3/8" - 2"

Models: Socket, threaded

Bodies: PVC, CPVC

Seat: PTFE backed with EPDM

Seal: EPDM



NSF-61 Certified

(3/8" - 2" PVC/EPDM)

Ball Check Valves

Sizes (True Union): 1/2" - 2"
Sizes (Single Union): 3" - 4"
Models (PVC & CPVC): Socket, threaded, flanged (ANSI), butt
Models (PP & PVDF): Butt, IPS or metric (DIN) socket
Bodies: PVC, CPVC, PP, PVDF
Seats: EPDM, FKM, PTFE
Seals: EPDM, FKM, PTFE
Options: Foot valve screen and stainless steel springs

NSF-61 Certified
 (1/2" - 4" PVC/CPVC/EPDM/FKM)



Gate Valves

Sizes: 1-1/2" - 14"
Body: HI-PVC
Model: Flanged (ANSI)
Type: Non-rising stem
Seals: EPDM or FKM

NSF-61 Certified
 (1-1/2" - 14" PVC/PP/EPDM/FKM)



Type-14 True Union Diaphragm Valves

Sizes: 1/2" - 2"
Bodies: PVC, CPVC, PP, PVDF
Bonnet: PVC, PP, PPG, PVDF
End Connectors (PVC & CPVC): IPS socket or threaded
End Connectors (PP & PVDF): IPS or metric (DIN) socket, threaded, butt
Diaphragms: EPDM, three-layer EPDM/PVDF/PTFE; also available in nitrile and FKM

NSF-61 Certified
 (1/2" - 2" PVC/CPVC/EPDM/PTFE)



Swing Check Valves

Sizes: 3/4" - 8"
Model: Flanged (ANSI)
Bodies: HI-PVC, PP, PVDF
Seats: EPDM, FKM, PTFE
Options: Lever and weight stainless steel springs



Labcock® Ball Valves

Size: 1/4"
Bodies: PVC
Models: Male thread x male thread, male thread x hose (OD 0.375"), male thread x female thread, male thread x hose, hose x hose, female thread x female thread, male thread elbow (OD 0.63") 90°
Seats: EPDM
Seals: EPDM

NSF-61 Certified
 (1/4" PVC/EPDM)



Globe Valves

Sizes: 1/2" - 4"
Bodies: PVC, PP
Model (Flanged): 1/2" - 4" (ANSI)
Model (Socket or Threaded): 1/2" - 2"
Seals: EPDM or FKM



Flanged Diaphragm Valves

Sizes: 1/2" - 10"
Bodies: PVC, CPVC, PP, PVDF
Bonnet: PVC, PP, PPG, PVDF
End Connectors: Flanged
Diaphragms: EPDM, three-layer EPDM/PVDF/PTFE; also available in nitrile and FKM

NSF-61 Certified
 (1/2" - 4" PVC/CPVC/EPDM/PTFE)



Constant Flow Valves

Sizes: 1/2", 3/4", 1", 2", 3" and 4"
Body: PVC
Bonnet: PVC
Model: Flanged (ANSI)
Seals: EPDM
Springs: 304 Stainless steel with ETFE coating



Thermoplastic Valves

Type-57P Butterfly Valves

Sizes (Lever): 1-1/2" - 8"
Sizes (Gear): 1-1/2" - 14"
Models: Wafer, machined lug
Operators: Lever, Plasgear™
Bodies: PVC, CPVC, PP, PVDF
Discs: PVC, CPVC, PP, PVDF
Seats & Seals: EPDM, FKM, nitrile
Stems: 316 Stainless steel, titanium, Hastelloy®
Lugs: 316 stainless steel



NSF-61 Certified
(1-1/2" - 14" PVC, CPVC, PP/EPDM/FKM)

Type-57 IL Butterfly Valves

Sizes (Lever): 3" - 8"
Sizes (Gear): 3" - 12"
Model: Lug
Operators: Lever, Plasgear™
Body: PVC
Discs: PVC, PP, PVDF
Seats & Seals: EPDM, FKM, nitrile
Stems: 316 Stainless steel, titanium, Hastelloy®
Lugs: 316 Stainless steel

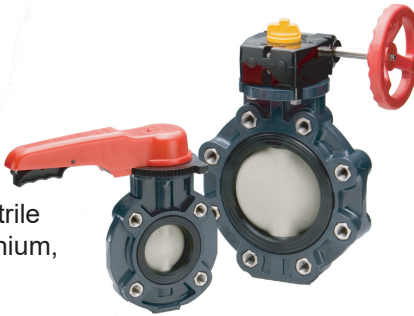


NSF-61 Certified
(3" - 12" PVC/PP/EPDM)

Type-57 LIS Butterfly Valves

ISO-5752 short face-to-face

Sizes: 3" - 8"
Models: Wafer, lug
Operators: Lever, Plasgear™
Body: PVC
Discs: PVC, CPVC, PP, PVDF
Seats & Seals: EPDM, FKM, nitrile
Stems: 316 Stainless steel, titanium, Hastelloy®
Lugs: 316 Stainless steel



Large Diameter Butterfly Valves

Sizes: 28" - 48"
Model: Wafer
Operator: Plasgear™
Body: PDCPD
Discs: PDCPD, PP, PVDF
(28": PP, PVDF (disc only))
Seats & Seals: EPDM, FKM
Stem: 403 Stainless steel



High Pressure Butterfly Valves

Sizes: 16" - 24"
Model: Wafer
Operator: Plasgear™
Body: PDCPD
Discs: PP, PVDF
Seats & Seals: EPDM, FKM, nitrile
Stems: 403 Stainless steel



Type-55 IS Butterfly Valves

ISO-5752 short face-to-face

Sizes (Lever): 2" - 5"
Sizes (Gear): 2" - 16"
Models: Wafer
Operators: Lever, Plasgear™
Body: Powder-coated ductile construction iron
Discs: PTFE
Seat & Seal: PTFE backed with neoprene
Stem: 304 stainless steel



Pool-Pro® Butterfly Valves

Sizes: 1-1/2" - 12"
Models: Wafer
Operators: Lever, Plasgear™
Body: PVC
Disc: PVC
Seat & Seal: EPDM
Stem: Stainless steel



Type-75 Butterfly Valves

Sizes: 18" - 24"
Models: Wafer, machined lug
Operators: Plasgear™
Bodies: PP, PVDF
Discs: PP, PVDF
Seats & Seals: EPDM, FKM, nitrile
Stems: 403 Stainless steel, 316 stainless steel, titanium, Hastelloy®
Lugs: 316 Stainless steel



Sediment Strainers

Sizes: 1/2" - 4"

Models: Socket, threaded, flanged (ANSI)

Body: PVC

Screens: Standard 20 mesh PVC (optional 30 and 40) (20, 40 and 60 stainless steel)

Seals: EPDM, FKM

NSF-61 Certified

(1/2" - 4" PVC/EPDM/FKM)



Globe Control Valves

Sizes: 1/2" - 4"

Materials: PVC, PP, PVDF, PTFE

Model: Flanged (ANSI)

Stem Seal: PTFE bellows

Valve Seal: FKM, EPDM, PTFE encapsulated FKM

Flow Curves: Linear or equal percentage

Rangeability: 1:10

Actuation: Electric or pneumatic

Operators: 3 - 15 positioner, 4 - 20 positioner



Wafer Check Valves

Sizes: 3" - 12"

Body: PVC

Seats: EPDM, FKM

Options: SWP-8 (stainless steel) spring, ETFE coated

Available in ANSI, DIN or JIS pattern



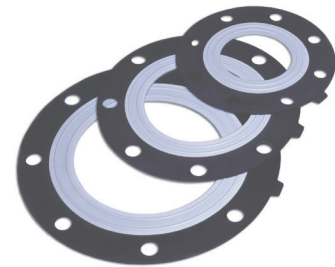
AV Gaskets

Materials/Sizes:

EPDM: 1/2" - 12"

PTFE-bonded EPDM: 1/2" - 12"

PVDF-bonded EPDM: 1/2" - 10" (except 1-1/4" and 2-1/2")



Butterfly Valve Features

Plasgear™ (Plastic Gear)

Plasgear™ is standard on all Asahi/America 1-1/2" - 14" Type-57P butterfly valves and 16" Type-56 butterfly valves; it can also be supplied without the valve. Constructed of composite plastic with black urethane coating, Plasgear™ will not corrode or rust as a result of exposure to harsh chemicals.



Butterfly Valve Options

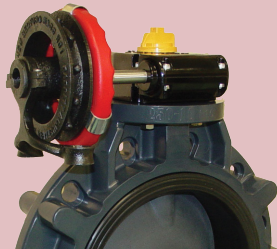
Speed Handle™

The Speed Handle™ is an accessory added to the Plasgear™ gear operator for butterfly valves. The revolving grip permits faster, single-handed revolutions of the hand wheel for quicker valve actuation.



Chain Operator

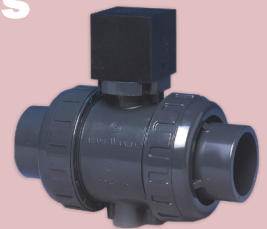
Installed on the round handwheel of a valve in overhead, out-of-reach locations. The valve is operated by pulling on the chain.



Ball Valve Options

Operating Nuts

Available in 2" square nut or "T" nut configurations. Used for remote operation of a valve by a wrench.



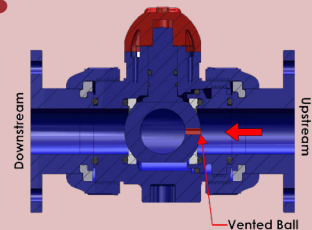
Type-21 Ball Valve Locking Handles

Prevents unauthorized operation of the valve. Available in sizes 1/2" - 4" (only sizes 2-1/2" - 4" require tool for installation).



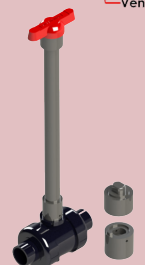
Vented Ball Valves

Prevents off-gas build up in sodium hypochlorite applications. We can factory-equip our ball valves with an 1/8" vent hole. This provides a longer valve life and safer operation.



Stem Extension Kits

Type-21 ball valve stem extension kits are the ideal solution for accessing valves that are installed in out-of-reach locations.



Electric Actuators & Accessories

Series 19 CAV Com Pack® Electric Actuators

Sizes: C20 for 3/8" - 2" Omni® Type-27 ball valves
Model: On/off
Enclosure: NEMA 4X
Voltage: 95 VAC to 265 VAC multi-voltage
Torque: 177 in-lbs
Valve Options: Available as valve and actuator package with Omni® Type-27 ball valves



Series 19 SAV Smart Pack® Electric Actuators

Sizes: S20, S50, S110
Models: On/off, failsafe, modulating, modulating failsafe
Enclosure: NEMA 4X
Voltage: 95 to 265 VAC multi-voltage
Torque: 177 in-lbs to 973 in-lbs
Valve Options: Available as valve and actuator package with Type-21/ Type-21a SST ball valves, Type-23 Multiport® ball valves, and Type-57 series butterfly valves



Series 92 Electric Actuators

Torque: 400 in-lbs to 2,000 in-lbs
Voltage: 120 VAC
Enclosure: NEMA 4X
Conduit: 2 x 1/2 NPT
Manual Override: Declutching
Options: Voltages, auxiliary contacts, heater, positioners, transmitter, explosion-proof enclosure
Valve Options: Can be mounted on Type-21/21a ball valves, Type-23 Multiport® ball valves, and Type-57P butterfly valves



UL-508 LISTED
UL-1203

Series 94 Electric Actuators

Torque: 150 in-lbs to 300 in-lbs
Voltage: 120 VAC
Enclosure: NEMA 4X
Conduit: 2 x 1/2 NPT
Manual Override: Declutching
Options: Voltages, auxiliary contacts, heater, positioners, transmitter
Valve Options: Can be mounted on Type-21/21a ball valves, Type-23 Multiport® ball valves, Type-57P butterfly valves, and Type-75 butterfly valves



UL-508 LISTED

Series 17 Electric Actuators

Torque: 350 in-lbs
Voltage: 85 - 265 VAC
Enclosure: NEMA 4X/6
Conduit: Flying leads
Manual Override: Declutching
Auxiliary Contacts: Two-SPDT switches
Heater: 2 Watts
Valve Options: Can be mounted on Type-21/21a ball valves, Type-23 Multiport® ball valves, and Type-57P butterfly valves



Series 10 Electric Actuators

Torque: 1,320 in-lbs to 26,040 in-lbs
Voltage: 110 VAC
Enclosure: NEMA 4X/6
Conduit: 2 x 3/4 NPT
Manual Override: Declutching
Auxiliary Contacts: Two-SPDT switches
Heater: 7 - 10 Watts
Options: Voltages, positioners, transmitter, explosion-proof enclosure



CSA
ATEX

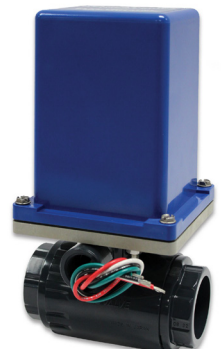
Local/Remote Stations

- Used in conjunction with Series 10, Series 92, or Series 94 electric actuators
- NEMA 4X enclosure open/close selector
- Switch and indicator lights 120 VAC



Series 83 Electromni®

Sizes: A83 3/8" - 2"
Torque: 120 in-lbs
Voltage: 115 VAC
Enclosure: NEMA 4X
Amp Draw: 2.1 Amps
Conduit: 1/2" NPT
Valve Options: Available as a valve and actuator package with Omni® Type-27 ball valves, Type-21 ball valves, and Type-23 Multiport® valves



Series 79 Pneumatic Actuators

Models: A79P - M79P

Torque: 50 in-lbs to 44,611 in-lbs

Action: Single acting, double acting

Air Supply: 80 - 120psi

Materials: PAG, 316 stainless steel, Rilsan-coated aluminum

Design: Rack and pinion

Options: Filter regulator, solenoids, limit switches, positioners, declutchable manual override; can adjust springs for lower air supply

Valve Options: Can be mounted to Type-21/21a ball valves, Type-23 Multiport® valves, and Type-57P butterfly valves



Type-14 Pneumatic Actuators

Sizes: 1/2" - 4"

Models: Air-to-air, air-to-spring

Indication: Top visual indication of valve position

Air Supply: 60 - 90psi

Bodies: PVC, CPVC, PP, PVDF

Bonnet: PPG

Options: Solenoids, limit switches, positioners



Series 79 PST A202DN

Input Current: 4 to 20mA

Supply Air Pressure: 60 - 100psi

Resolution: 0.2% of span

Linearity: 0.5% of span

Hysteresis: 0.5% of span

Repeatability: 0.3% of span

Air Connection: 1/4" NPT

Conduit Entry: 1/2" NPT



Type-14 PST A202DN

Input Current: 4 to 20mA

Supply Air Pressure: 60 - 90psi

Resolution: 0.2% of span

Linearity: 0.5% of span

Hysteresis: 0.5% of span

Repeatability: 0.3% of span

Air Connections: 1/4" NPT

Conduit Entry: 1/2" NPT



Series 79 PST 101

Input Signal: 3 - 15psi

Supply Air Pressure: 60 - 100psi

Air Consumption: 0.4 CFM at 60psi

Linearity: 2% of span

Hysteresis: 1% of span

Repeatability: 0.5% of span

Air Connection: 1/4" NPT



Type-14 PST 101

Input Signal: 3 - 15psi

Supply Air Pressure: 60 - 90psi

Air Consumption: 0.4 CFM at 60psi

Linearity: 2% of span

Hysteresis: 1% of span

Repeatability: 0.5% of span

Air Connections: 1/4" NPT



Fast Pack Valve & Actuator Packages

- Electric or pneumatic actuators mounted on ball or butterfly valves
- Ten different options to choose from
- **Ships within 24 hours from time of order!**



Industrial Piping Systems



Proline® PP Piping System



SDR 11, 150psi: 20 - 500mm (1/2" - 20")
SDR 33, 45psi: 110 - 1200mm (4" - 48")
(Other sizes and SDRs available up to 1400mm (55"))
Welding: Butt, socket, electrofusion

NSF-61 Certified

Ultra Proline® ECTFE (Halar®) Piping System



SDR 21, 150psi: 20 - 110mm (1/2" - 4")
Welding: Butt

Super Proline® PVDF (Chemical Grade) Piping System



SDR 21, 230psi: 20 - 315mm (1/2" - 12")
SDR 33, 150psi: 90 - 400mm (3" - 16")
Welding: Butt, socket

Chem Proline® Advanced PE Piping System



SDR 11, 150psi: 20 - 315mm (1/2" - 12")
Welding: Butt, socket, electrofusion

NSF-61 Certified

Industrial & Commercial Piping Systems

Air-Pro® Specially Formulated PE Compressed Air Piping System



AIR-PRO
Compressed Air Piping

SDR 7.4, 230psi: 20 - 110mm (1/2" - 4")
SDR 11, 150psi: 160 - 315mm (6" - 12")
Welding: Butt, socket, electrofusion

Pro-Vent® Duct System



PP: 63mm - 1200mm (2" - 48")
PPs: 63mm - 1200mm (2" - 48")
PPs-el: 8mm - 400mm (4" - 16")
PE: 90mm - 1200mm (3" - 48")
PVDF: 63mm - 400mm (2" - 16")
Welding: hot air or extrusion welding

Asahi/America's Asahitec™ PP-RCT piping system has a 30-year limited product warranty. Please visit our website at asahi-america.com/support/warranty-policy for full terms and conditions.

Asahitec™ PP-RCT Plumbing & HVAC Piping Systems



Asahitec™

Socket Fusion: 20 - 125mm (1/2" - 4-1/2")
Molded Butt Fusion: 160 - 630mm (6" - 24")
Welding: Butt, socket, electrofusion

NSF-14 Certified

Pressure Regulators/ Pressure Relief Valves



Sizes: 20mm - 110mm (1/2" - 4")
Models: Pressure regulators, back pressure regulators, relief valves for industrial and high purity piping systems
Materials: PVC, PP, PPN, PVDF, ECTFE



Double Containment Piping Systems

Poly-Flo® Coextruded Double Contained Piping System



Materials: Proline® PP-R, Chem Proline® Advanced PE
Pipe & Fittings: 1" x 1-1/2" (32 x 50mm), 2" x 3" (63 x 90mm) and 4" x 6" (110 x 160mm)
Welding: Simultaneous butt fusion

Duo-Pro® Engineered Double Contained Piping System



Materials: Proline® PP-R, Super Proline® Chem Grade PVDF, Ultra Proline® ECTFE, Chem Prolok® Advanced PE
Pipe & Fittings: 1/2" x 2" - 16" x 20"
Welding: Simultaneous butt fusion, staggered butt fusion
NSF-61 Certified
(Chem Proline® Advanced PE and Proline® PP components used)

Fluid-Lok® PE Double Contained Piping System



Material: PE 4710
Pipe and Fittings: 1" x 3" - 24" x 32"
Welding: Simultaneous butt fusion

Pro-Lock® PVC & CPVC Double Contained Piping System



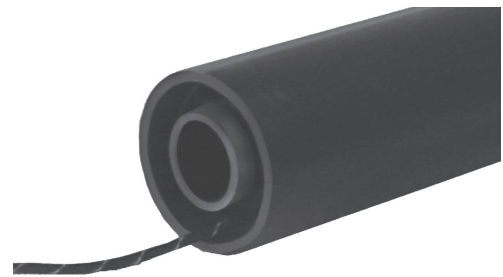
Materials: PVC, CPVC (clear PVC also available)
Pipe & Fittings: 1/2" x 2" - 4" x 8"
Welding: Simultaneous butt fusion, staggered solvent cement joint

LiquidWatch II® Electronic Leak Detection Systems



- A flexible, modular low-point system based on inline probes
- For underground pressure systems of hazardous chemicals

PAL-AT™ Cable Leak Detection Systems



- A continuous leak detection cable system that can also incorporate low-point probes
- Continuous sensing cable, low-point sensors, or a combination of components, cable and probes
- For underground pressure systems of hazardous chemicals

High Purity Piping Systems



Purad® PVDF Ultra High Purity Piping System



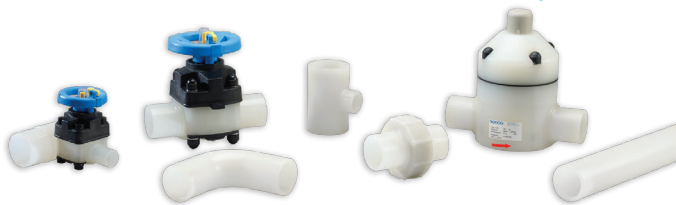
SDR 21, 230psi: 20 - 315mm (1/2" - 12")
 SDR 33, 150psi: 90 - 315mm (3" - 12")
 Welding: IR/butt, beadless, electrofusion

PP-Pure® PP High Purity Piping System



SDR 11, 150psi: 20 - 315mm (1/2" - 12")
 Welding: IR/butt, beadless

PolyPure® PP Natural High Purity Piping System



SDR 11, 150psi: 20 - 110mm (1/2" - 4")
 Welding: IR/butt, socket, beadless

Purflon® PFA High Purity Piping System



SDR 21, 150psi: 20 - 32mm (1/2" - 1")
 Welding: IR/butt

Dymatrix™ Specialty Valves

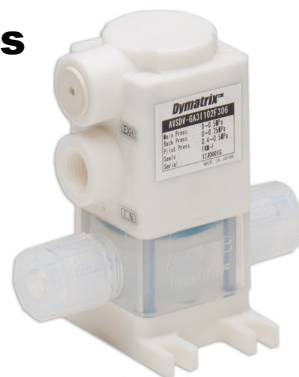
Multiport Valves

Sizes: 1/8" - 1"
Materials: PP, PPn, PVDF, ECTFE, PTFE, PFA
Actuation: Manual, pneumatic
Options: Electric solenoid, feedback switches
Connections: Flare, S-300, NPT, compression, triclamp, other options available



Diaphragm Valves

Sizes: 1/4" - 1"
Materials: PFA, PTFE
Actuation: Manual, pneumatic
Connections: Flare, S-300, NPT, other options available



Pressure Regulators

Sizes: 1/4" - 1"
Materials: PFA, PTFE
Actuation: Manual, pneumatic
Flow Ranges:
 LF: 10 - 500 mL/min
 MF: 0.4 - 15 L/min
 HF: 5 - 50 L/min
 SHF: 10 - 100 L/min
Connections: Flare, S-300



Needle Valves

Sizes: 1/4" - 1/2"
Materials: PFA, PTFE
Actuation: Manual
Connections: Flare, S-300, tube, specialty



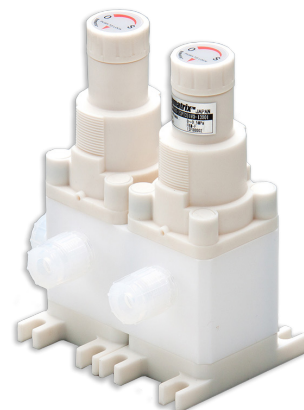
Pinch Valves

Sizes: 1/4" - 1"
Actuation: Manual, pneumatic
Connections: Flare, S-300



Specialty Integrated Valves

- Engineered application specific solutions that combine multiple types of Dymatrix™ valves onto a single manifold block
- **Key Attributes:** Compact design, reduced fittings, and dead legs



Falconics™ Flow Controller

Flow Rates: 25 - 250 mL/min & 50 - 500 mL/min
Functions: Temperature correction, auto purge, self diagnosis
Connections: Flare, S-300





Specialty Fittings and Valves

Series 1C and 1+ Compression Fittings

Sizes: 1/4" - 3/4"
Materials: PP, PFA in stock



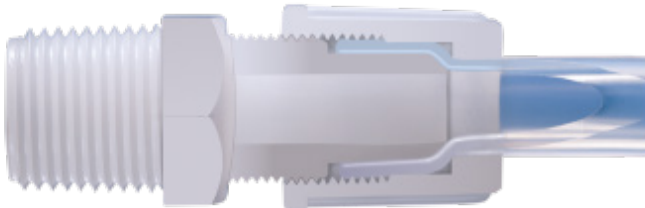
Series 6 Ball Valves

Sizes: 1/8" - 1/2"
Materials: PP, PPn, PVDF, PFA - up to 13 port valves available



Series 1D Flare Fittings

Sizes: 1/4" - 3/4"
Materials: PP, PFA in stock



Series 6 Needle Valves

Sizes: 1/8" - 1/2"
Materials: PP, PPn, PVDF, PFA - up to 13 port valves available

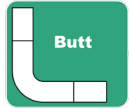


Heat Fusion Welding Equipment

Miniplast® Shop 4 Tool

Butt Fusion:
20 - 110mm (1/2" - 4")*

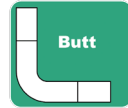
Materials:
PE, PP, PVDF



Maxiplast® Shop 6 Tool

Butt Fusion:
50 - 160mm (1-1/2" - 6")*

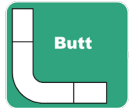
Materials:
PE, PP, PVDF



Halar® 6 Tool

Butt Fusion:
20 - 160mm (1/2" - 6")

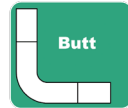
Materials:
PE, PP, PVDF



Shop 12 Tool

Butt Fusion:
50 - 315mm (1-1/2" - 12")*

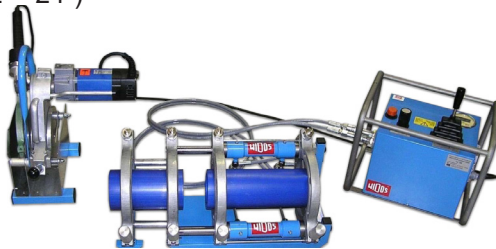
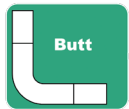
Materials:
PE, PP, PVDF



Field Welding Tools

Butt Fusion Field 6 - Field 24 Tools:
50mm - 630mm (1-1/2" - 24")

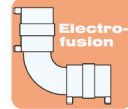
Materials:
PE, PP, PVDF



Polymatic Tool

Electrofusion:
Single wall piping systems

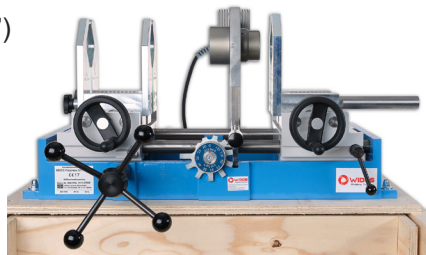
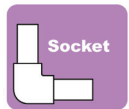
Materials:
PE, PP



Bench Socket Tool

Socket Fusion:
20 - 125mm (1/2" - 4-1/2")

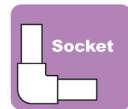
Materials:
PE, PP, PVDF



Hand Socket Welder Tool

Socket Fusion:
20 - 125mm (1/2" - 4-1/2")

Materials:
PE, PP, PVDF



Hot Air Weld Tool

Hot Air Welding:
3 - 4mm

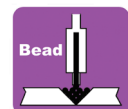
Materials:
PVC, PE, PP, PVDF, ECTFE



Extrusion Welder Tool

Extrusion Welding:
3 - 5mm (1/8" - 3/16")

Materials:
PP, PPs, PPs-EI, PE, PVDF



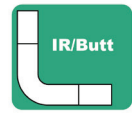
*Sizes shown for manual machines, does not indicate weldability of all machines. Consult welding machine catalog.

SP Series Welding Equipment

SP 63-S Mobile

IR Fusion:
20 - 63mm (1/2" - 2")

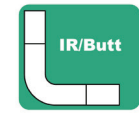
Materials:
PE 100-RC, PP, PVDF,
ECTFE



SP 110-S V3

IR Fusion:
20 - 110mm (1/2" - 4")

Materials:
PE 100-RC, PP, PVDF, PFA,
ECTFE, Poly-Flo®



SP 250-S V3

IR Fusion:
110 - 250mm (4" - 10")

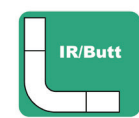
Materials:
PE 100-RC, PP, PVDF



SP 315-S V3

IR Fusion:
110 - 315mm (4" - 12")

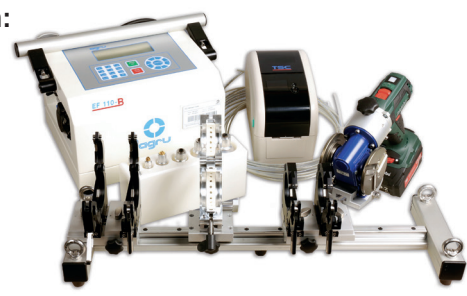
Materials:
PE 100-RC, PP, PVDF



EF 110-B

Beadless Electrofusion:
20 - 63mm (1/2" - 2")

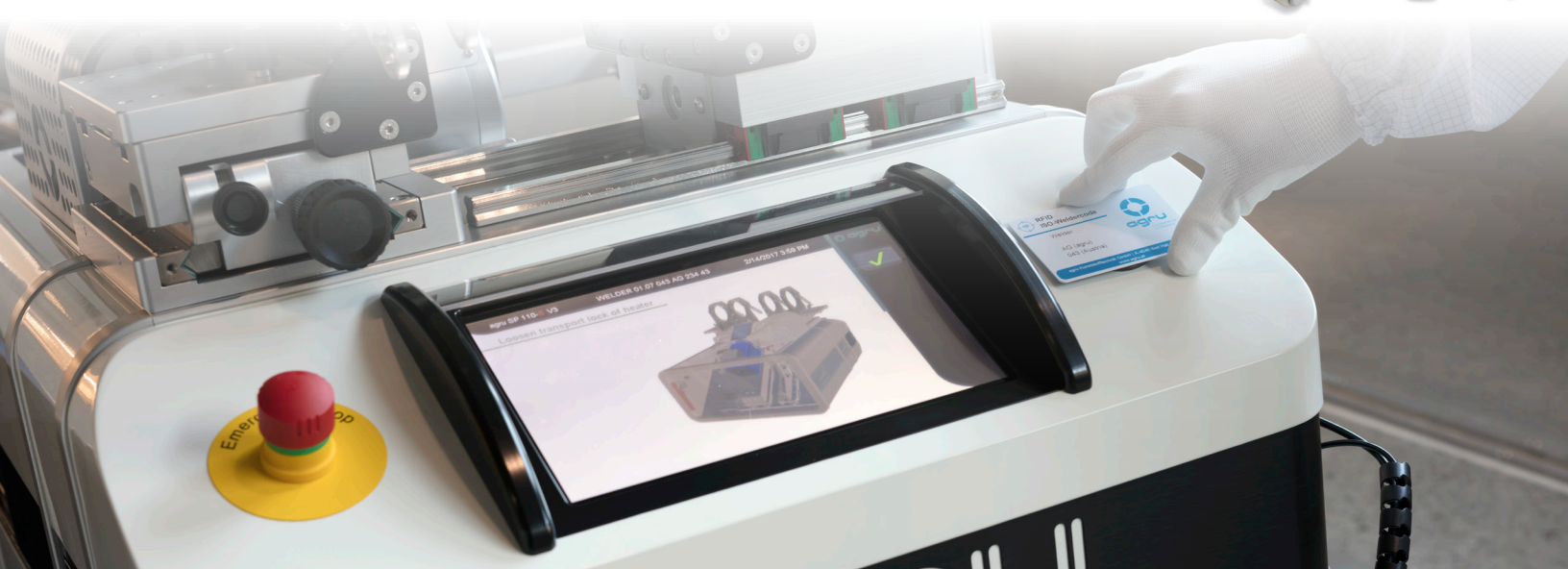
Materials:
Only PVDF



SP 110-B

Beadless Fusion:
20 - 110mm (1/2" - 4")

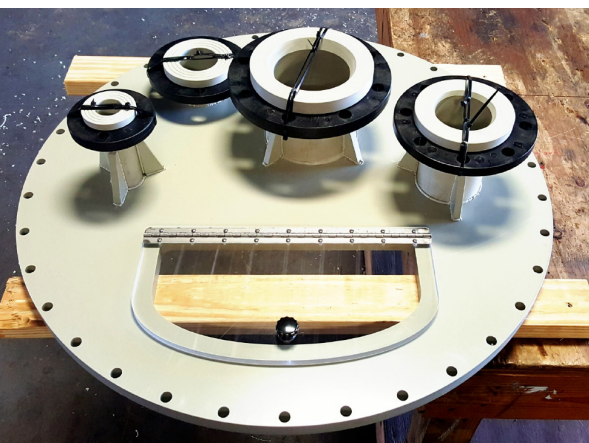
Materials:
PP, PVDF



Your Experts in Custom Fabrication

From concept to completion, we're dedicated to supporting you. Asahi/America's experienced team of application engineers and fabrication personnel will work to accommodate your system's unique needs with our wide range of corrosion resistant thermoplastic materials. Some of our capabilities include:

- Pre-fabricated pipe spools
- Manifolds & distribution headers
- Double containment pipe & valves
- Mitered fittings
- Tank & vat fume covers
- Duct work
- Storage tanks
- Machined components
- High purity pipe spools & valves
- Manholes, sumps & catch basins
- Vessel internals, dip pipes & spargers





VALVE AND ACTUATION WARRANTY AND LIMITATIONS

1.1 These Limited Representations and Warranties are applicable to all end-customers purchasing **Asahi Valve and Actuation products manufactured and distributed by Asahi/America, Inc.** and are subject to Asahi's standard Terms and Conditions of sale. Asahi warrants that for the warranty period, the products will be free from defects in materials and workmanship under normal and proper use, and will conform to manufacturer published specifications. This warranty is subject to the proper storage, handling, transportation, installation, use and maintenance of Asahi products by both the installer and final customer. This warranty does not include defects due to normal wear and tear or deterioration.

1.2 Customer shall provide written notice of any non-conformities or visible defects regarding the products within 14 business days of discovery. Failure to provide prompt notice shall void this warranty.

1.3 The sole obligation under the foregoing warranty is, at Asahi's discretion, to repair, to replace or exchange the product or to refund the purchase price. Any repaired, replaced or exchanged products shall be subject to the warranty set forth in 1.1 following the repair, the replacement or the exchange. If the company has received notification from customer, and no defects of the product could be discovered, the customer shall bear the costs that the company incurred as a result of the notice.

1.4 The "warranty period" for Asahi valves and Asahi actuators shall be **three years from the date of invoice** subject to the exclusion of the items detailed in 1.5 below, which shall be covered under our warranty policy for a period of one year from the date of invoice.

1.5 Asahi's warranty with respect to the following items will be covered for a period of one year from the date of invoice: Dymatrix™ valves, actuated Dymatrix™ valves, pressure relief valves, regulators, EM-Technik valves and actuated EM-Technik valves, Type-342 and Type-343 diaphragm valves, Air-Pro® ball valves, PE 100 ball valves, PP natural ball valves, Halar® (ECTFE) ball valves, and globe control valves. All actuators manufactured supplied by other manufacturers (Limitorque, Rotork, Century, etc.)

1.6 The company does not authorize any person or party to assume or create for it any other obligation or liability in connection with the products except as set forth herein.

1.7 All requests and notices under this warranty shall be directed to:

Asahi/America, Inc.
Attn: Customer Service
655 Andover Street
Lawrence, MA 01843
Tel: 781-321-5409 • Fax: 978-685-3010

Please visit our website for our warranty on piping and all other products.



Another Corrosion Problem Solved.™

655 ANDOVER STREET
LAWRENCE, MA 01843

DIRECT SALES:
EAST: 800-232-7244
CENTRAL: 800-442-7244
WEST: 800-282-7244

ASAHI-AMERICA.COM

| 800-343-3618

| ASAHI@ASAHI-AMERICA.COM