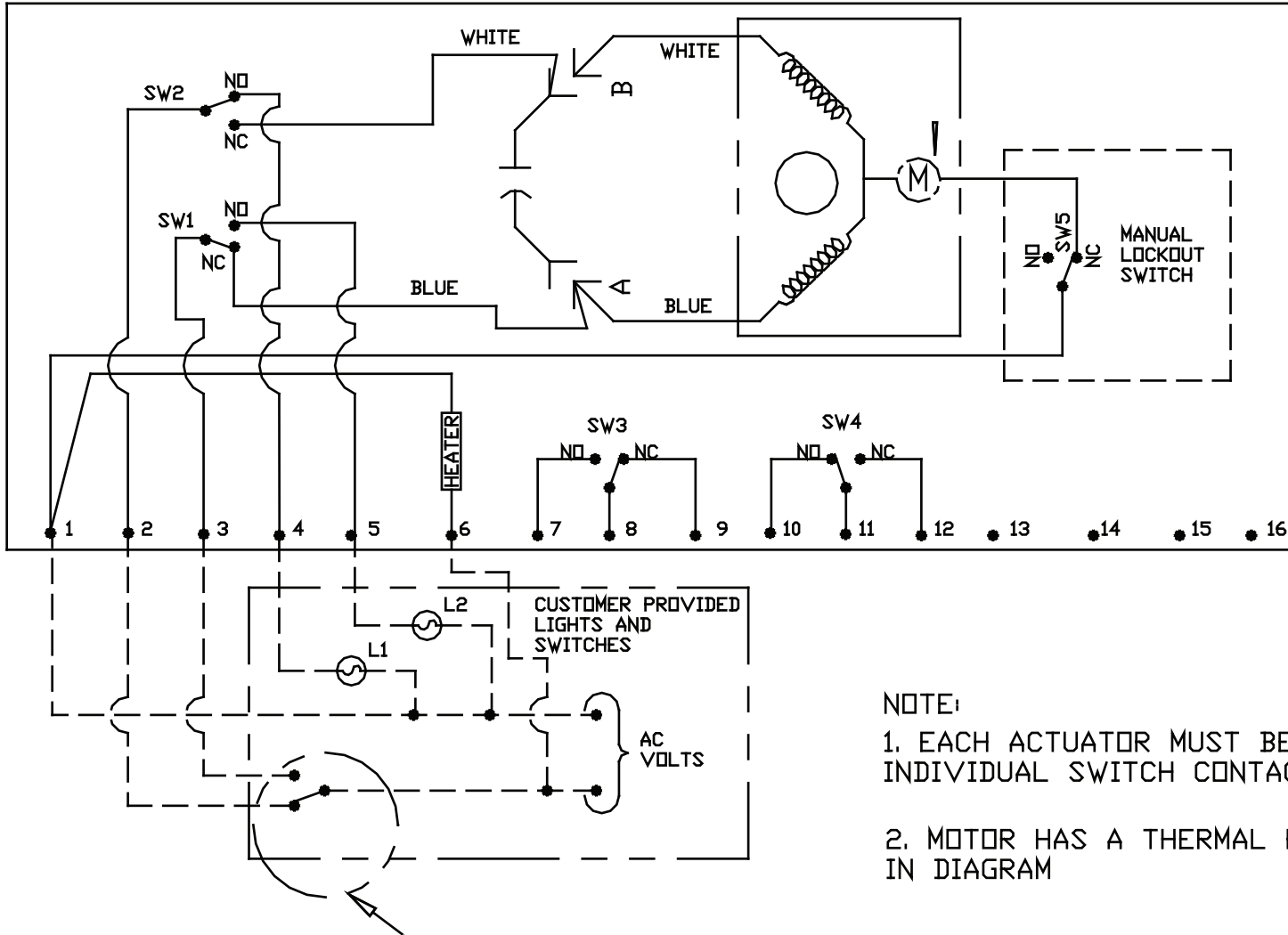




Asahi/America Series 87 Electric Actuator Wiring Diagram

WIRING DIAGRAM FOR SERIES E87 & F87 120 VAC

ACTUATOR SHOWN IN COUNTER-CLOCKWISE EXTREME OF TRAVEL, OR "OPEN" POSITION



NOTE:

1. EACH ACTUATOR MUST BE POWERED THRU ITS OWN INDIVIDUAL SWITCH CONTACTS TO AVOID CROSS FEED

2. MOTOR HAS A THERMAL PROTECTOR AS SHOWN BY (M) IN DIAGRAM