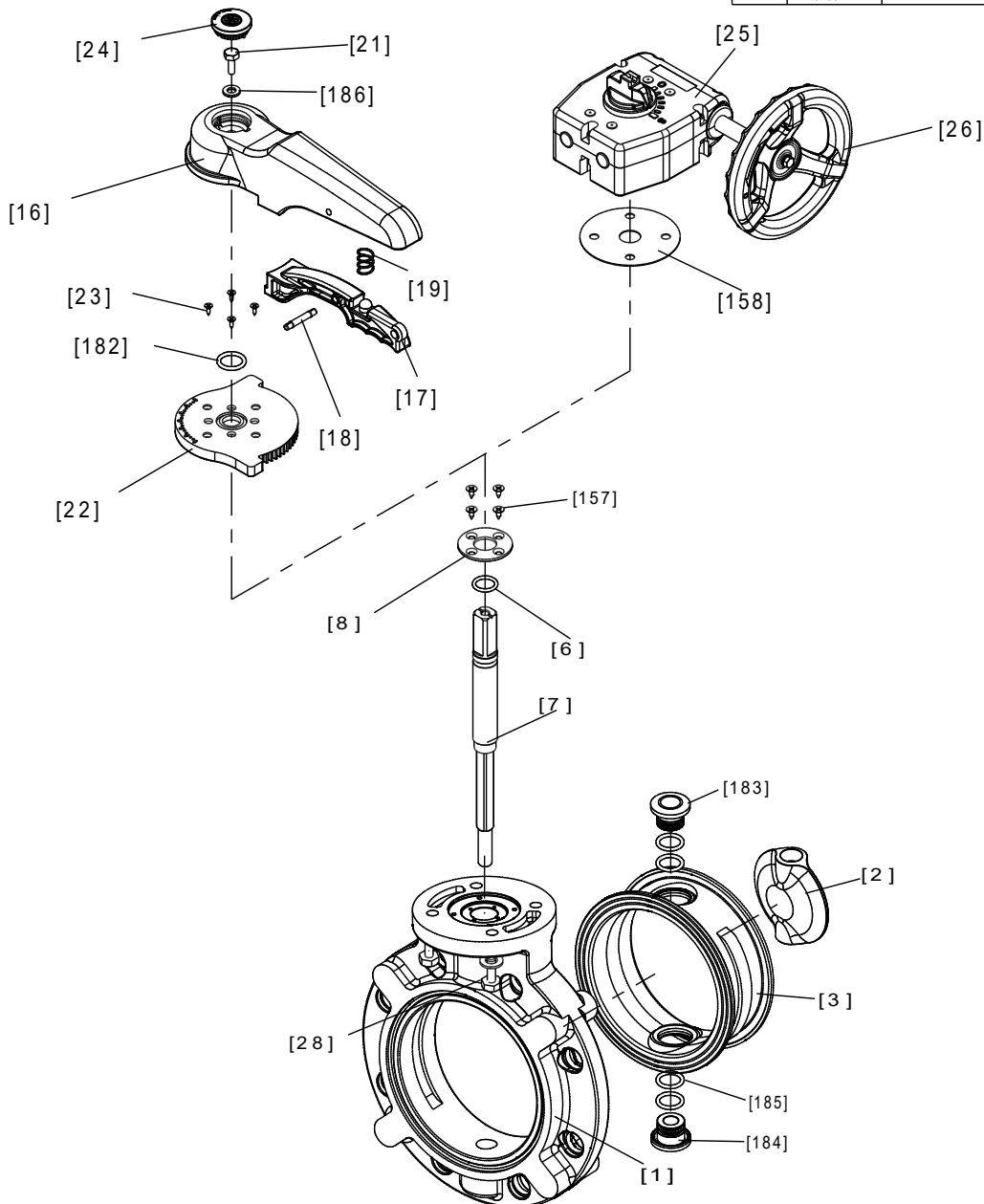


REV	DATE	DESCRIPTION	BY	FROM
A	4/6/17	FIRST ISSUE	JH	DH



NO.	DESCRIPTION	NO.	DESCRIPTION	NO.	DESCRIPTION
[1]	BODY	[18]	PIN	[157]	SCREW (F)
[2]	DISC	[19]	SPRING	[158]	GASKET (L)
[3]	SEAT	[21]	BOLT (A)	[182]	O-RING (H)
[6]	O-RING (C)	[22]	LOCKING PLATE	[183]	SEAT BUSH (A)
[7]	STEM	[23]	SCREW (B)	[184]	SEAT BUSH (B)
[8]	STEM HOLDER (A)	[24]	CAP (A)	[185]	O-RING (I)
[16]	HANDLE (A)	[25]	GEAR BOX	[186]	WASHER
[17]	HANDLE LEVER	[28]	BOLT (C)	[26]	HANDWHEEL

UNLESS OTHERWISE SPECIFIED	
DIMENSIONS ARE IN INCHES	
MACHINING	2 PL DECIMALS ± .01
TOLERANCES:	3 PL DECIMALS ± .005
	ANGULAR ± 1/2°
	FRACTIONAL ± 1/64
FABRICATION	1/2" - 8" ± 1/4
TOLERANCES:	10" AND UP ± 1/2
	ANGULAR ± 1.0°
WELD TYPE:	N/A
MATERIAL:	AS NOTED
FINISH:	125µ"

THIS DRAWING AND ALL INFORMATION HEREIN IS THE PROPERTY OF ASAHI/AMERICA. ANY COPYING, REPRODUCTION OR UNAUTHORIZED USE IS FORBIDDEN WITHOUT WRITTEN CONSENT.	
NAME	DATE
DR J. Hughes	04/06/17
REV	
APPR D. Hurley	04/06/17
PRODUCT:	VALVE & ACT
WO#/SO#	

ASAHI/AMERICA
ISO 9001 CERTIFIED
 655 ANDOVER STREET, LAWRENCE, MA



BUTTERFLY VALVE T57P EXP. VIEW
(1-1/2" - 8" LEVER) (1-1/2" - 14" GEAR)

JDE PART # _____
 SIZE **A** DWG # **0180BF57P** REVISION **A**
 SCALE N/A SHEET 1 OF 1